

WINTER REFRIGERATION

Industrial Equipment Manufacturing L.L.C



HEAT PUMP

Introduction

WINTER Refrigeration Industrial Equipment Manufacturing L.L.C. is known to provide smart and sophisticated solutions for industrial refrigeration applications. We, as a packager for refrigeration units with decades of experience, have the customer always in our focus. The satisfaction of the customer is our daily aim. A flexible and dynamic principle of operation is for WINTER a self-evidence and we always guarantee a high quality product out of our facility.

The WINTER Heat Pump is one of our products and the main components for this package are from well-established international brands of the refrigeration industry. The utilized compressors are the markets leading equipment providing secure performances. We are able to offer a wide range of compressor models with comprehensive cooling capacities. In combination with our engineering, design and manufacturing we are ensuring to hold the entire process in our hands.

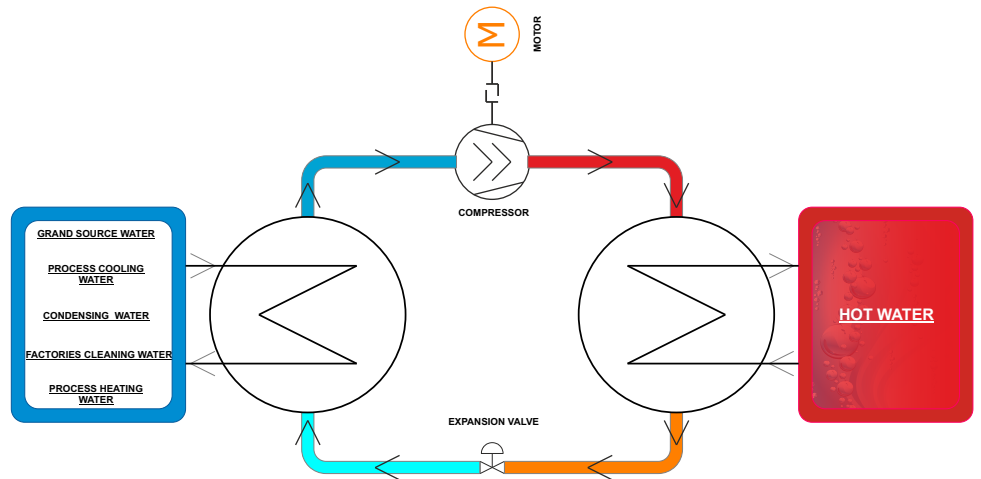
Commissioning and After Sales Service

As per customer request, WINTER can also provide supervision of commissioning and start-up and will fully accompany our customers during the whole lifetime of the WINTER Heat Pump.

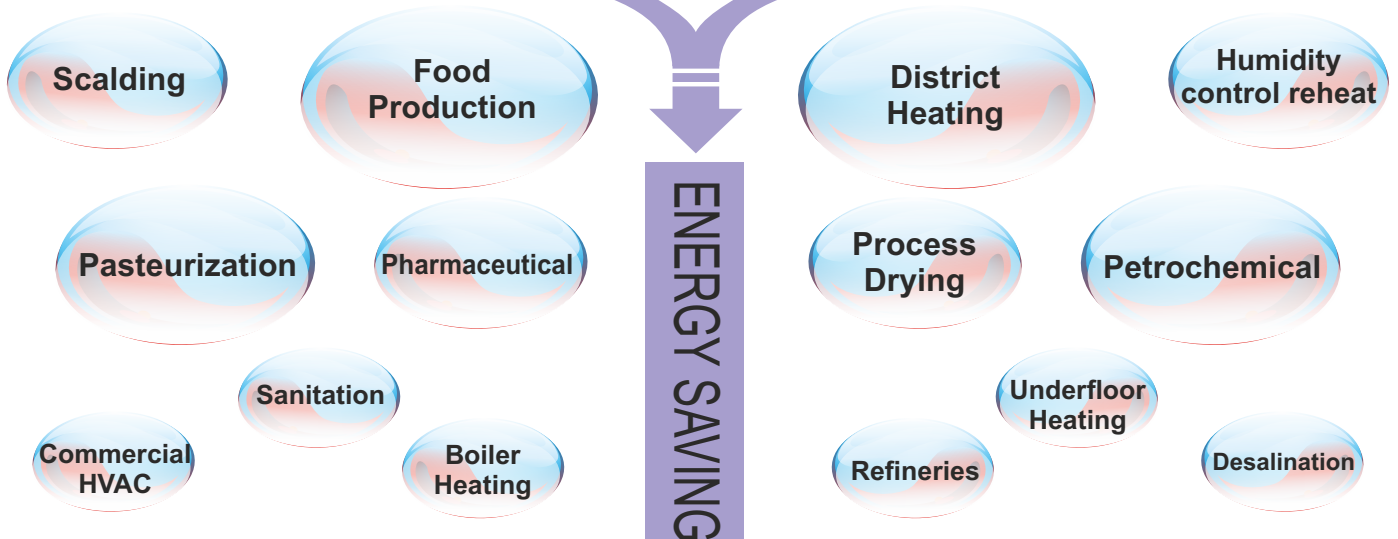
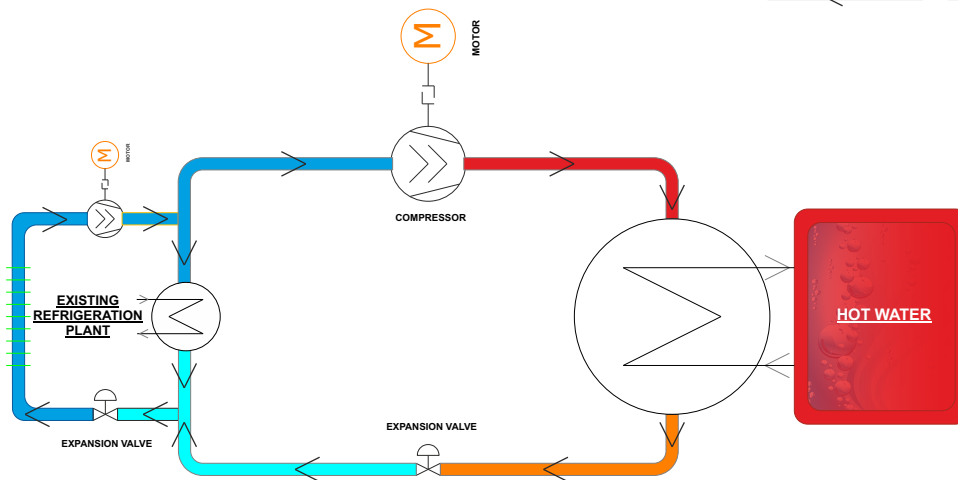


Applications

Heat pumps are not only used for heating but also for cooling in many different industrial applications.

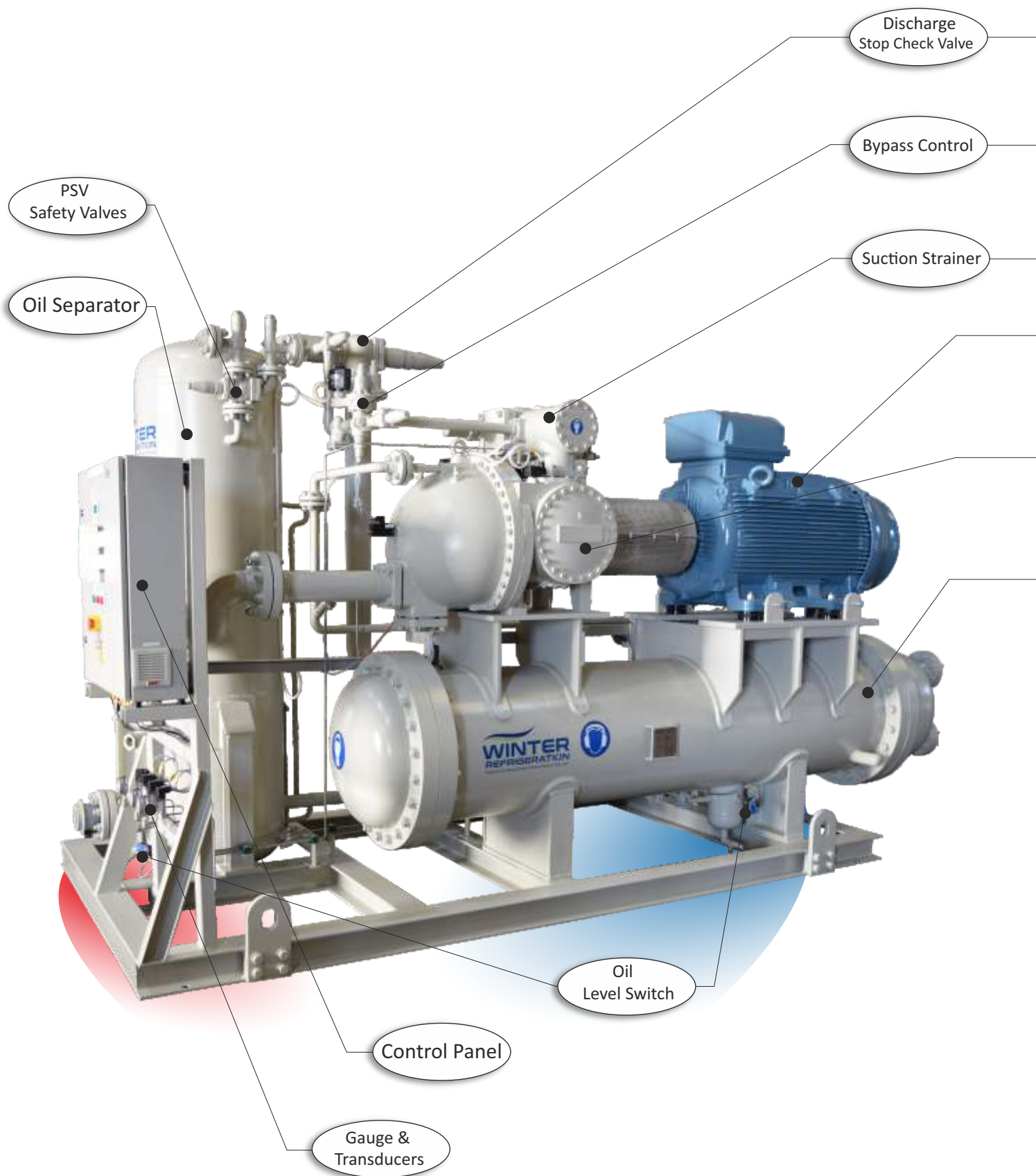


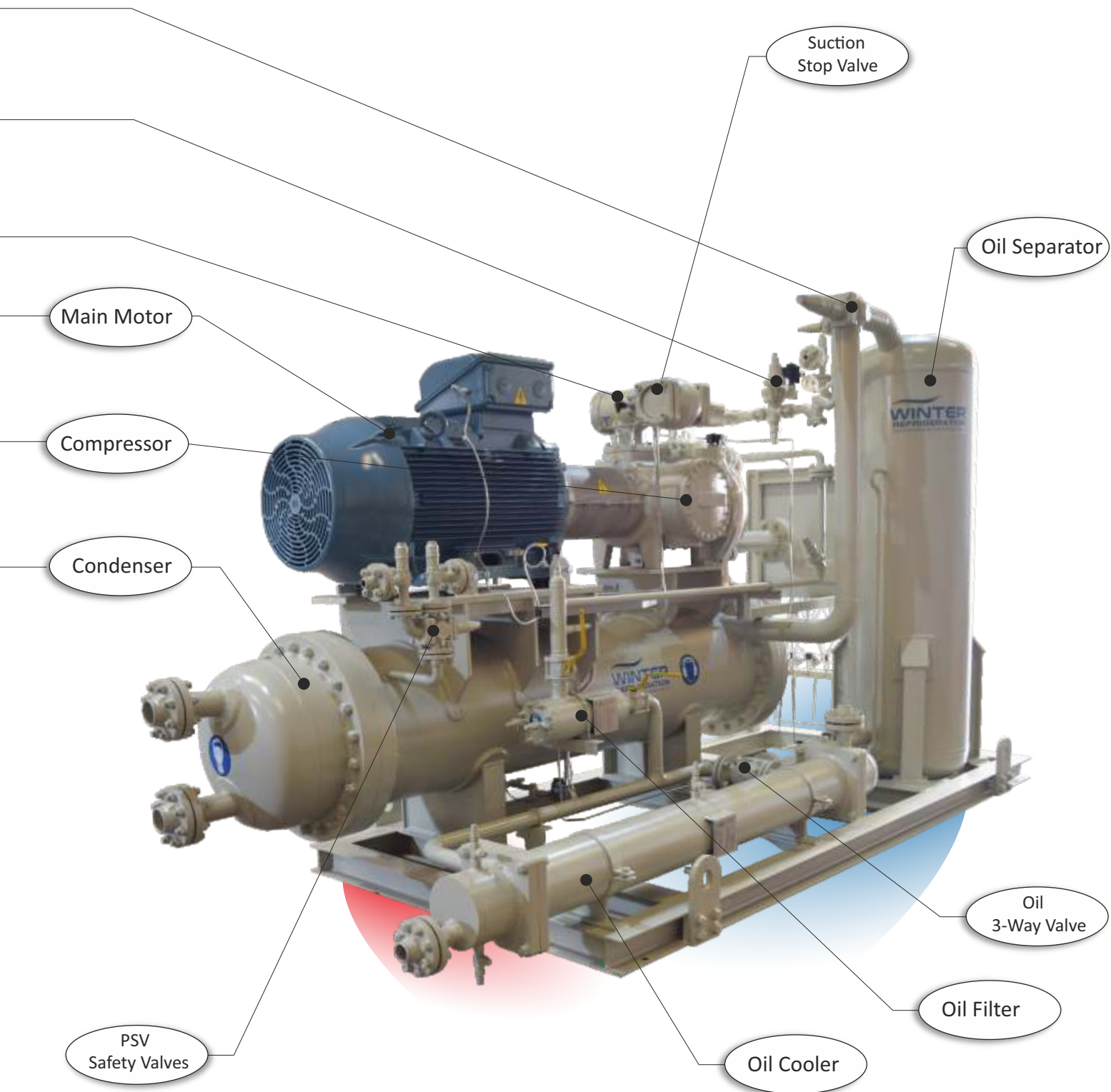
The technology used behind this system is to transfer heat by extracting it from any source and converting it to higher temperatures.



The technology of the heat pump is used in recovering waste heat and to raise its temperature to more useful levels allowing significant potential for energy saving.

WINTER Heat Pump Pack



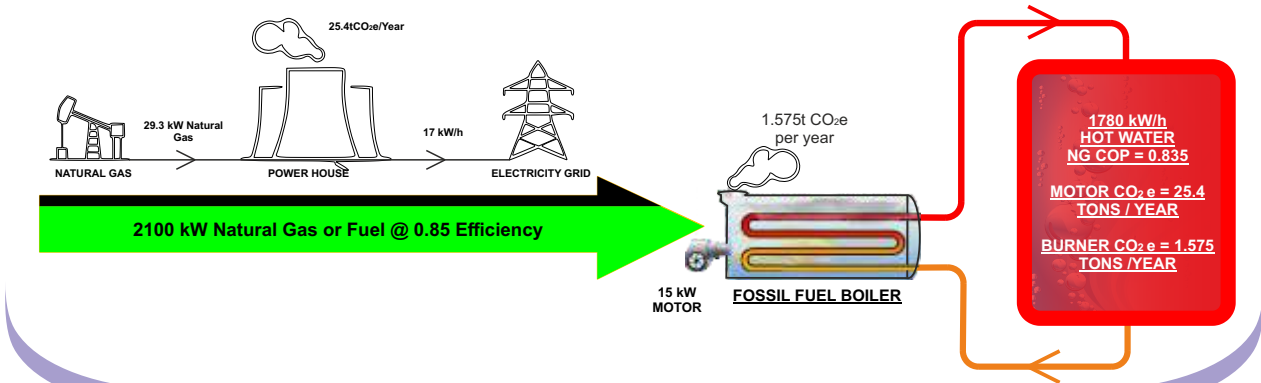


WINTER Heat Pump Pack

Advantages & Benefits

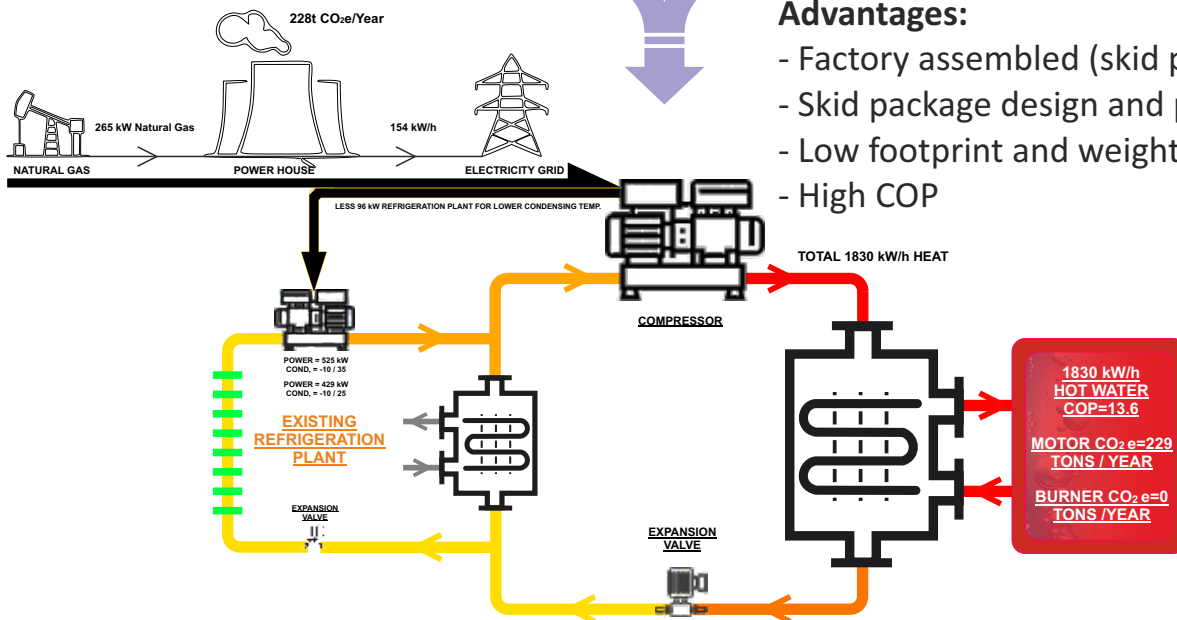
Benefits:

- High ROI
- Plug & Play installation combined with quick commissioning
- Possibility to eliminate the boiler (boiler investment and its operation cost)

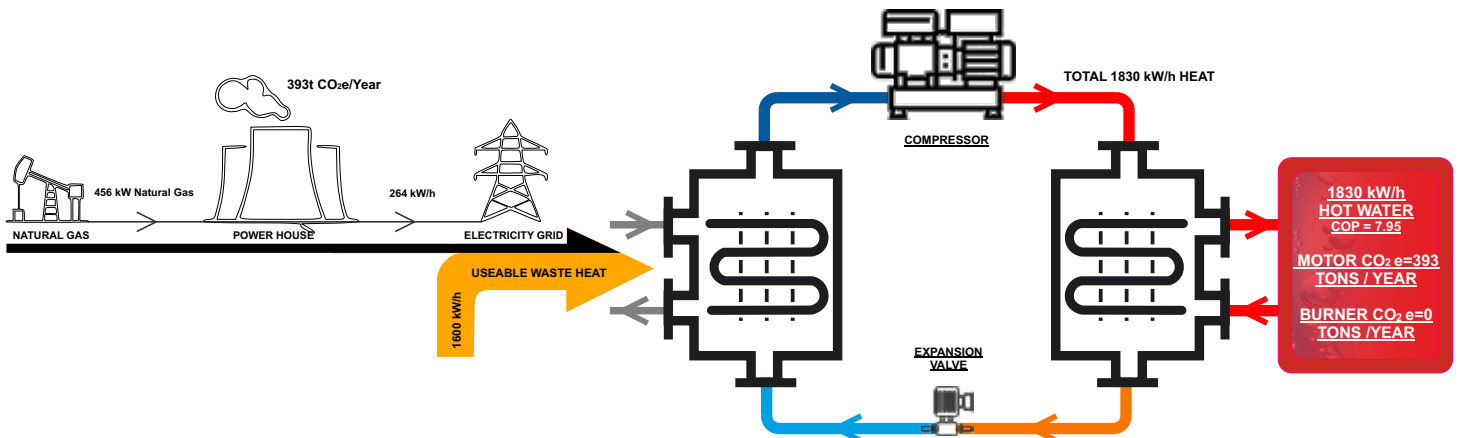


Advantages:

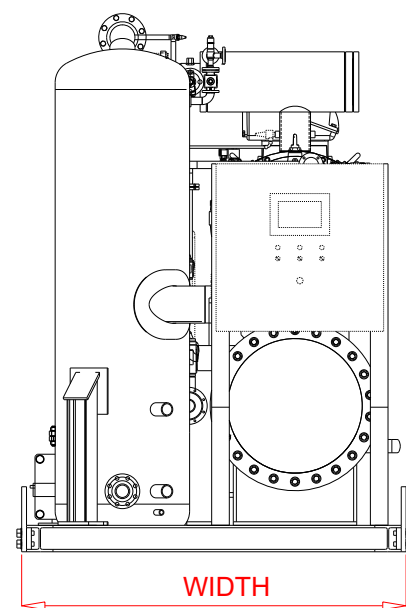
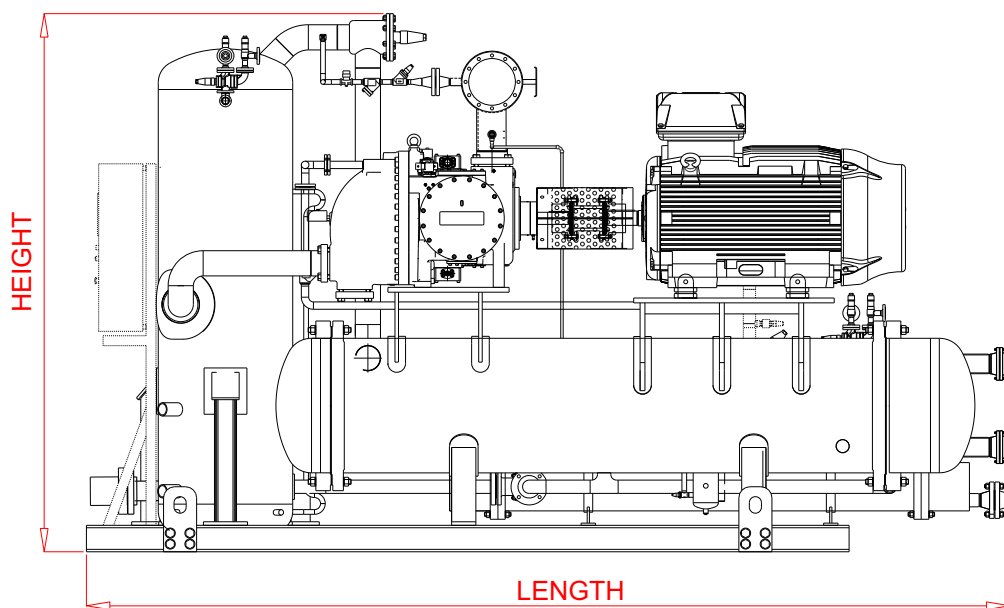
- Factory assembled (skid package design)
- Skid package design and pre-tested
- Low footprint and weight
- High COP



- Reduction of CO₂ emissions
- Reduction of natural gas consumption
- Usage of environmental friendly refrigerants (green refrigeration)



Specification & Dimensions



Item No.	HP-Pack	Speed RPM	Heating Capacity kW	COP	Motor Size kW	Water Flow m3/h	Approximate Dimensions		
							Length mm	Width mm	Height mm
1	HP45R	1,480	1,065	5.547	220	22.01	4,200	1,800	2,450
2	HP46R	1,480	1,158	5.541	250	23.93	4,200	1,800	2,450
3	HP47R	1,480	1,315	5.389	280	27.18	4,200	1,800	2,450
4	HP58R	1,480	1,508	5.544	315	31.17	4,800	1,800	2,450
5	HP50R	1,480	1,829	5.593	355	37.80	4,800	1,800	2,450
6	HP61R	1,480	2,013	5.500	400	41.60	4,800	1,800	2,450
7	HP45	2,980	2,197	5.438	450	45.40	5,200	1,800	2,450
8	HP46	2,980	2,393	5.426	500	49.46	5,200	1,800	2,450
9	HP47	2,980	2,718	5.288	560	56.17	5,500	1,800	2,450
10	HP58	2,980	3,082	5.369	630	63.69	5,500	1,800	2,450

Notes:

- 1- Water flow based on Water INLET at 30°C and Water OUTLET at 71°C.
- 2- Heat source coming from ammonia refrigeration system with saturated condensing condition of 25°C.
- 3- Numbers are subject to change without notice.

WINTER Heat Pump Pack

Your trustful partner for Industrial Refrigeration Applications



Head office: P.O.Box: 39156, Dubai - U.A.E

Tel: +971 4 324 1075 | Fax: 971 4 324 1083 | Email: info@winter.ae
www.winter.ae



PED
DGRL



**Winter Refrigeration Industrial
Equipment Manufacturing L.L.C.**